

## Moe Training Tutorial 8

### New Flats (Four storeys, Third, Second, First, Ground and basement)

1. What is the statutory control, which allows you to ask for means of escape and warning requirements? (Act, regulations section, etc.)
2. What code for means of escape can be used?

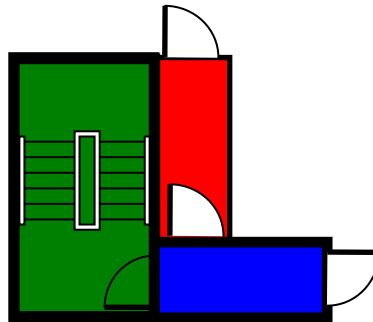
3. What structural means of escape requirements are needed?

Show the protected routes (where required) by using the following to identify the routes: -

Colour the stairways in **green**

Common protected lobbies in **blue**

Protected halls in dwellings in **red**

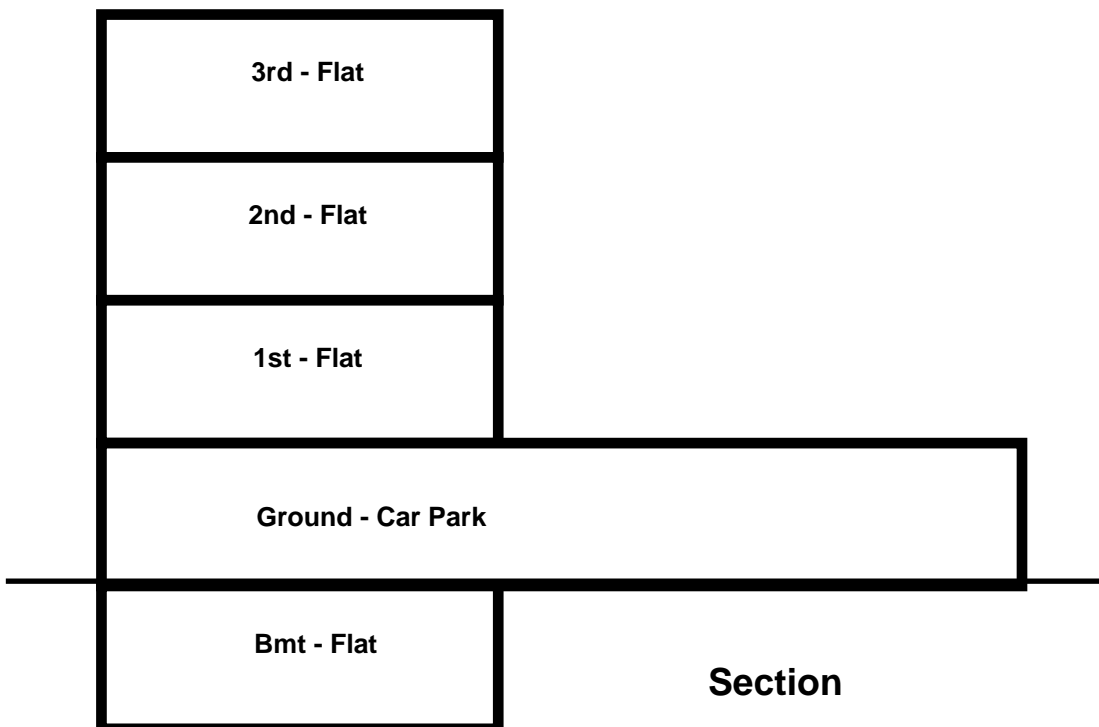


4. The applicant is considering having a Car park in the ground storey in place of the dwellings at ground level. The car park will be below the flats on the upper floors.

Is this possible? If not illustrate the arrangement with a Ground floor car park, which would be acceptable.

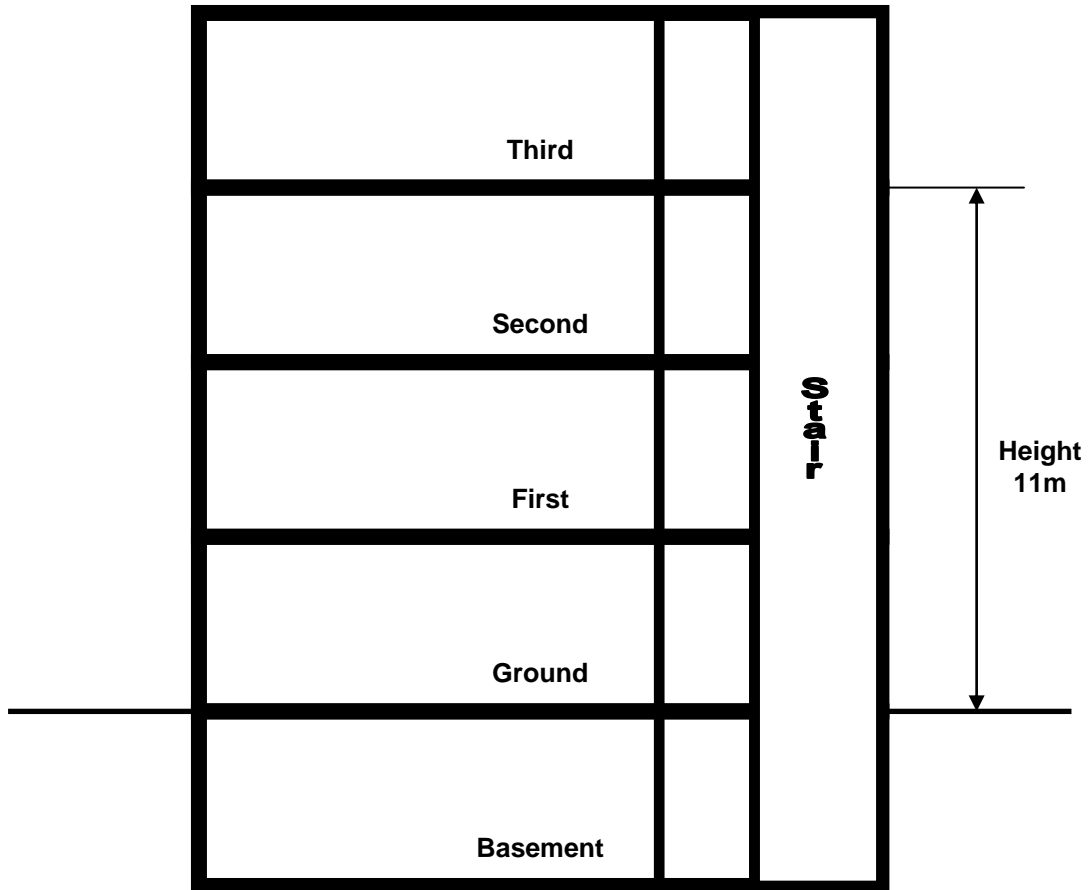
**Hint;** Item 2.21c of Approved Document B 2006. Particular attention should be given to the definition of 'open sided'. The drawing should show the requirements of the open sided definition.

This is the proposal: -

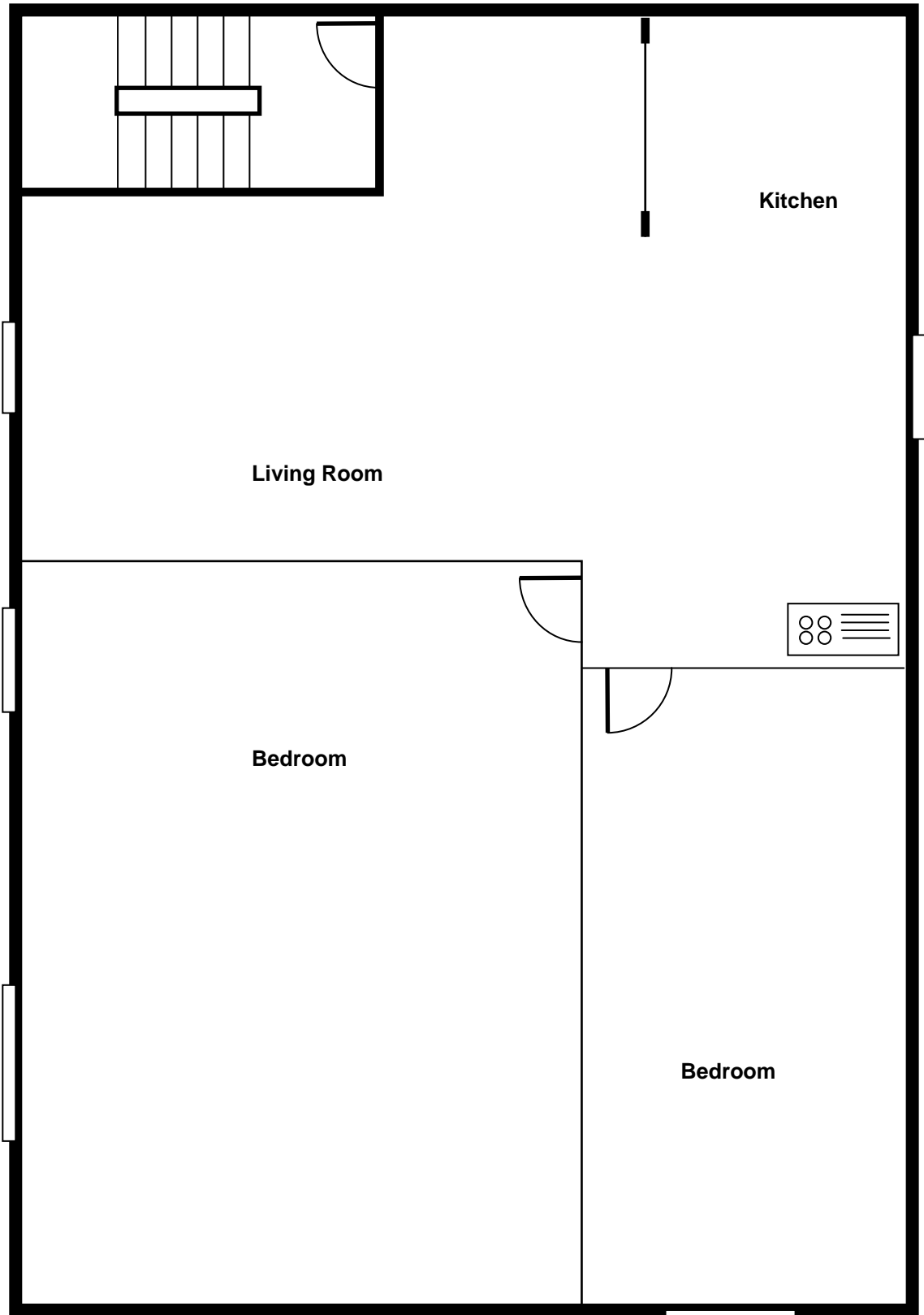


5. Show the location of smoke detectors on the plan and state what clauses of the Approved Document Part B the system should comply with?
6. Should the Fire Authority be consulted?
7. What are the requirements for ventilation of the common stair?
8. Do the common lobbies require ventilation?
9. State on the plans the doors that need to be fire resisting and the standard required?
10. To what extent can the entrance doors to the flats be glazed?
11. What alternative means of escape code could be used instead of Approved Document B section B1?

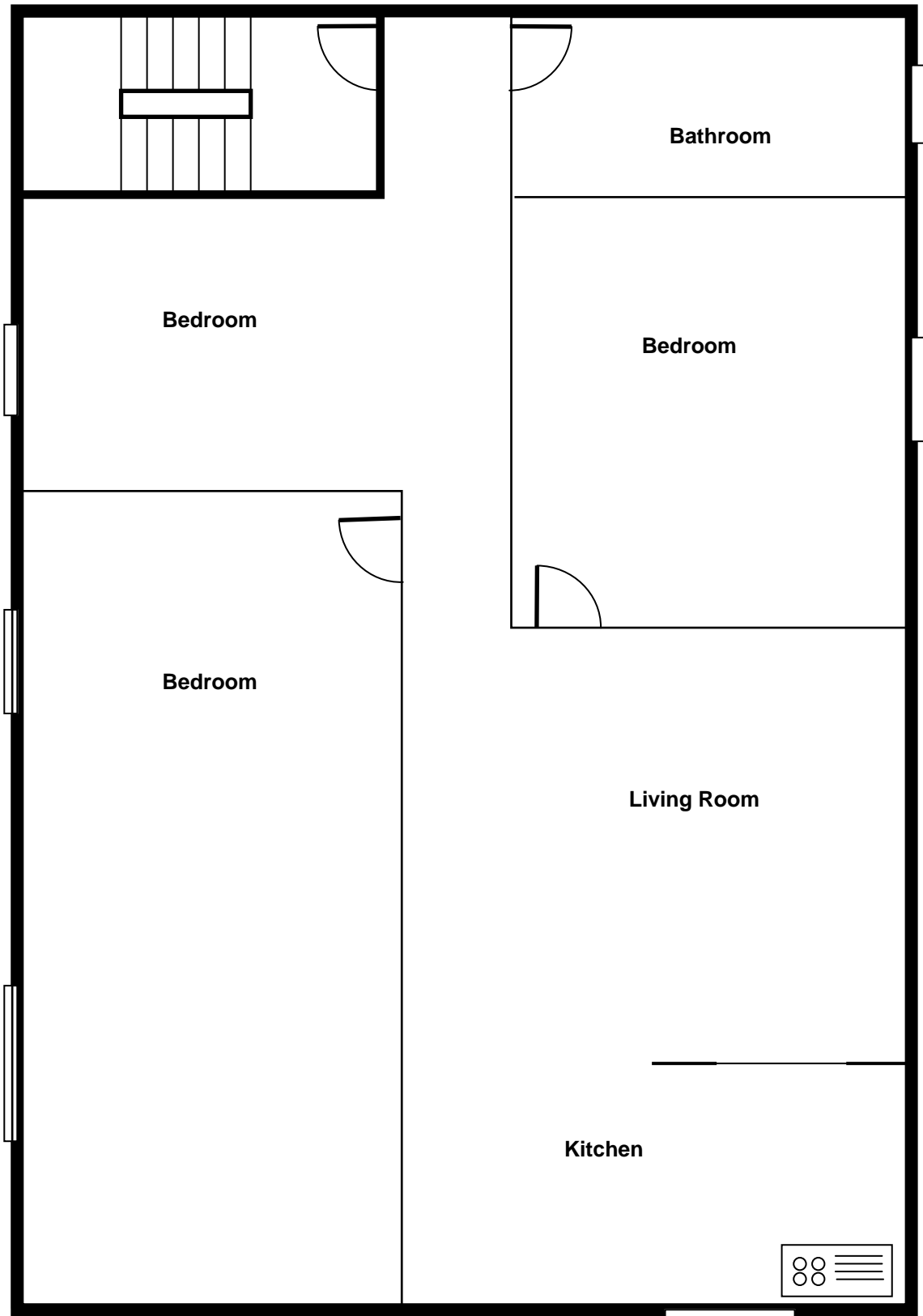
# Flats



Section



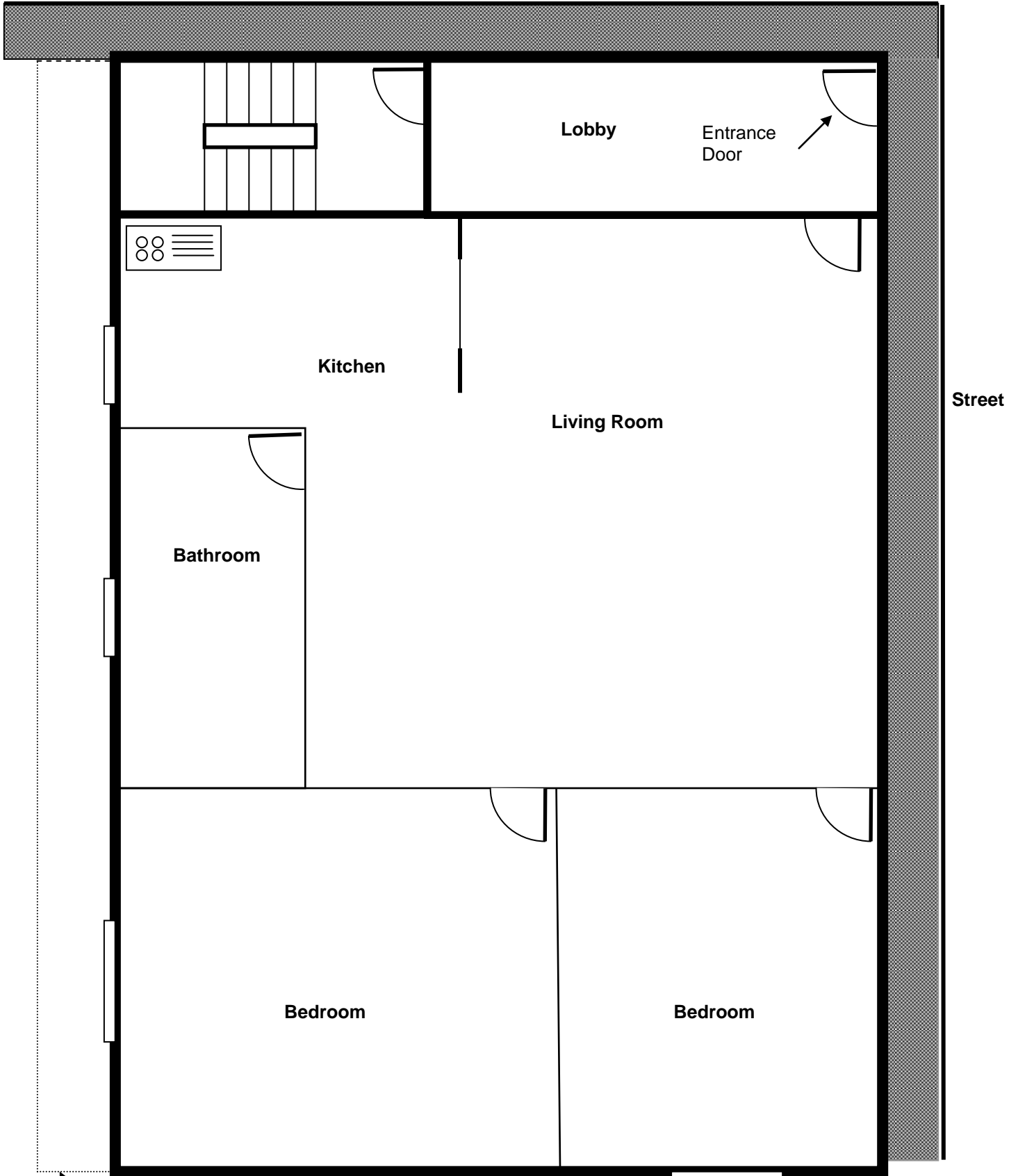
Third Floor



**Second Floor**



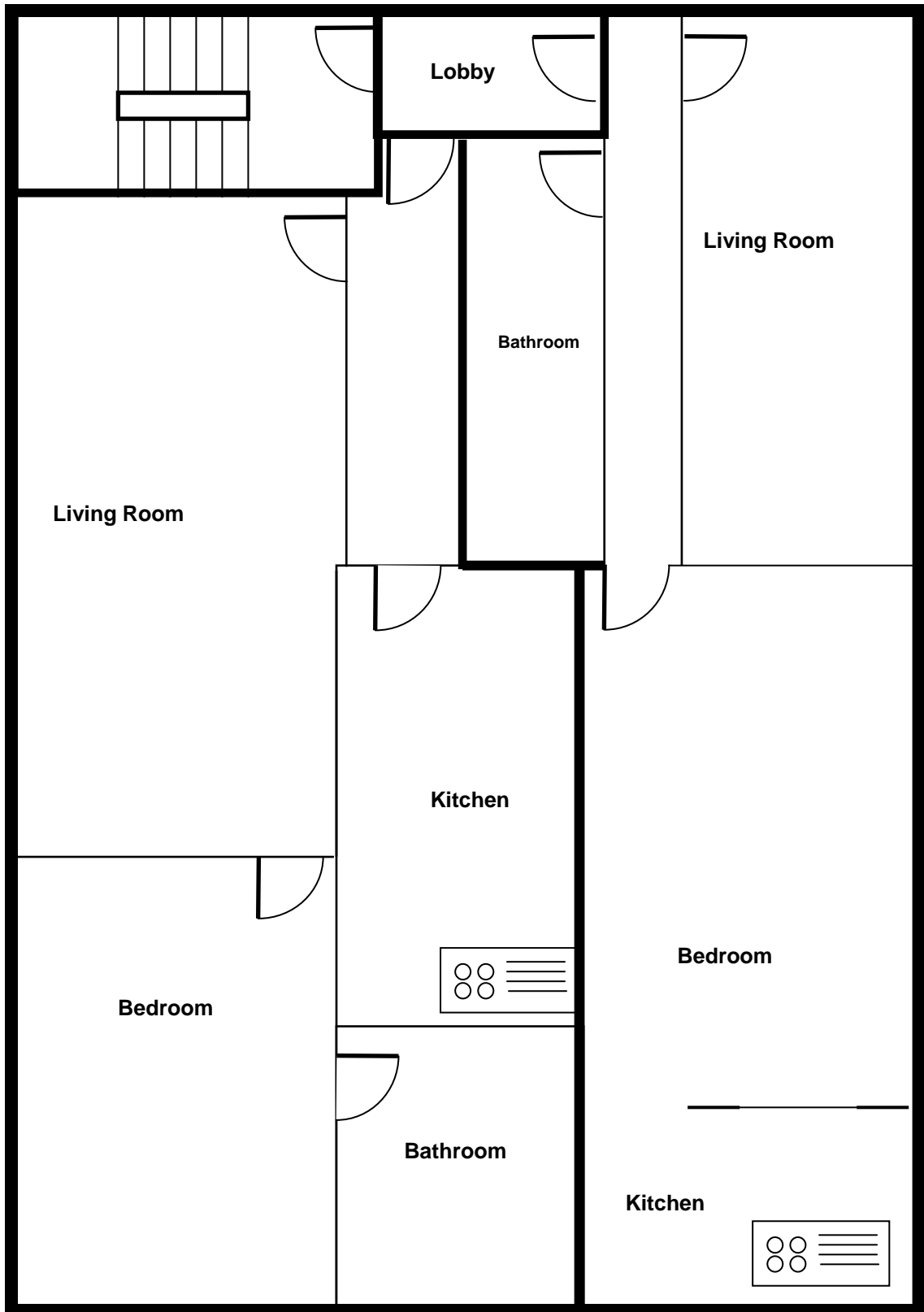
Street



Street

Railings

Ground Floor



**Basement**